

F&J SPECIALTY PRODUCTS, INC.

The Nucleus of Quality Air Monitoring Programs

EMERGENCY RESPONSE AIR SAMPLERS

**CENTRIFUGAL PUMP VACUUM SYSTEM MODELS
OPERABLE FROM LINE POWER, OR 12 VDC POWER**

DFCP Series



CE



CE

Rev: 15 April 2024

EMERGENCY RESPONSE AIR SAMPLERS

Table of Contents

	Page
Typical Maximum Flow Rates	3
Models	
DFCP-60L-12Li	4
DFCP-60L-AC	6
DFCP-75L-400-12Li	8
DFCP-75L-400-AC	10
DFCP-ABM50-75L-20Li	12
DFCP-ABM50-75L-AC	14
DFCP-ABM50-100L-30Li	16
Indoor Filter Holders	18
Li-Battery Bank	19-20
World Calibrator	21
Consumables and Accessories	22
Filter Holders	23
Product Line Sheet	24

Units here will not be eligible for CE marking until product safety testing is completed on latest electrical components: DFM, Power Management Board, etc.

EMERGENCY RESPONSE AIR SAMPLERS

Typical Maximum Flow Rates DFCP Series

GROUP 1			
50 SLPM FLOW SENSOR			
FILTER MEDIA	(SLPM)		(SCFM)
521147 + TE2C	49.5		1.3
FP47 + TE3C	47.8		1.4
FP47 + TE2C	45.1		1.3
521147 + TE3C	47.5		1.5
FP47	53.2		1.7
GROUP 2			
75 LPM FLOW SENSOR			
FP47M2 + TE2C	89.4		2.6
521147	59.4		1.9
FP47M + TE2C	71.5		2.0
WHATMAN 41: 47MM D	60.2		2.1
GROUP 3			
100 LPM FLOW SENSOR			
FP47M	108.5		3.8
FP47M + TE3C	78.5		2.9
FP47M2 + TE3C	113.1		3.3
GROUP 4			
CUSTOM FLOW SENSOR INSTALLED TO MATCH MAXIMUM FLOW RATE			
FP4.0	212.1		6.0
FP4.0M	270.5		3.8
W41	212.6		8.5
FRENCH (PINK) 110MM	245.2		8.0

* Flow sensor will have 250 LPM flow value for top of range

1. All models contain a 12 VDC brushless motor coupled to a 3" diameter centrifugal pump
2. All battery models utilize either a 12 Ah, or 20 Ah LiFe PO₄ battery
3. All models can operate from 100 to 240 VAC; 50/60 HZ.

EMERGENCY RESPONSE SAMPLING SYSTEM

DIGITAL FLOW METER TECHNOLOGY

F&J MODEL DFCP-60L-12Li

NOTABLE FEATURES:

- State-of-the-Art Electronics
- Operating Modes
 - Line Power (100VAC – 250VAC)
 - On-board 12.8V, 12Ah LiFePO₄ Battery
- Lightweight: — 9 lbs. (4.1 kg)
- Maximum Flow: 60 SLPM; typical
- Bright OLED 4 line x 32 character display
- Automatic Flow Control Feature
- Flowrate and Volume totalizations displayed are corrected to a factory settable Reference Temperature and Pressure (4 options available)
- Auto shut-off by time or volume
- Brushless motor
- Internal data storage downloadable as (.csv) file
- Data download via Bluetooth with optional Bluetooth Dongle for PC devices
- Battery capacity gauge



**Shown with optional
filter holder FJ-34**

GENERAL DESCRIPTION:

F&J Model DFCP-60L-12Li is a lightweight, small footprint, DC voltage powered air sampling system operable from either line power or the on-board 12 Ah LiFePO₄ battery.

The DFCP-60L-12Li is well suited for emergency response sampling activities where users do not know whether line power will be available. Typical operating time from on-board batteries is approximately 4 hours utilizing FP47M, 47 mm glass fiber filter paper.

The automatic flow control feature with the F&J Digital Flowmeter technology provides maximum flexibility for emergency response sampling responsibilities. The set flowrate is maintained automatically in case of dust loading and does not require operator attention.

Typical flow range is 10-60 SLPM (0.3 –2.1 SCFM).

The air sampler is also equipped with internal data storage that allows the user to download the sampling data as a .csv file for easy data analysis.

DFCP-60L-12Li AC/DC Powered Air Sampler Specifications

Pump Type: High efficiency centrifugal pump

Motor: Brushless 12 VDC (35,000 rpm)

Maximum Flowrate: Typical 60 LPM with 47 mm glass fiber media (98%DOP efficiency)

Power Source:

External – Line Power; 100VAC to 240VAC
Internal— On-board 12.8 VDC, 12 Ah LiFePO₄ battery

Battery Charging System:

Internal System which charges from line power.

Operating Time on Batteries:

~ 4 hours w/FP47M glass fiber filter paper

Current Draw: 10 A maximum on 12.8 VDC
1 A maximum on line power

Filter Holder Fitting: 1.83—12 U.N.F (Air Sampler)
1.80—12 U.N.M (Filter Holder)

Handle: Durable metal /Plastic

Weight: 9 lbs. (4.1 kg)

Dimensions: 10.3” L × 10.5” W × 8.5” H
(26 × 27 × 22 cm)
Height with handle extended ~11.4”

Noise Level: Average dB 69.8 @ 1 meter

Operating Temperature: 16°F to 122°F (-10°C to 50°C)

Display: Bright OLED (4 line x 32 characters)

Elapsed Time: HHH:MM up to 168 hours

Flow Control:

Adjustable from keypad between 10-60 LPM

Flow Accuracy: ±4.0% of Full Scale

Factory Settable Reference T and P

Classical STP 0°C, 1 ATM (760 mmHg)
Normal T and P 20°C, 1 ATM (760 mmHg)
Modified Normal T and P 70°F, 1 ATM (760 mmHg)
Standard Ambient T and P 25°C, 1 ATM (760 mmHg)

OPTIONS:

- Bluetooth Dongle for PC Device (P/N: BTDG)

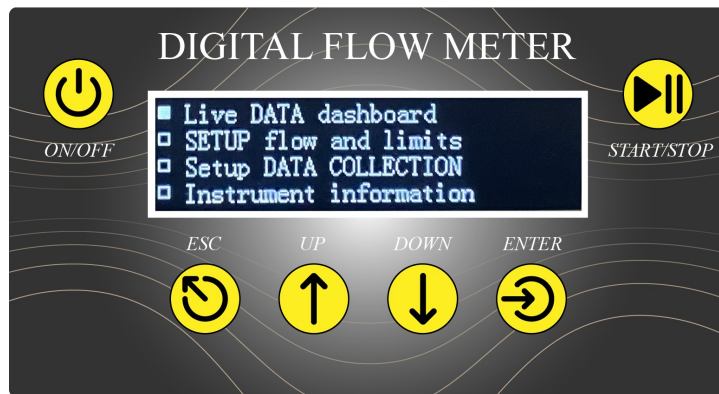
Standard Aluminum Combination Filter Holders Available:

FILTER HOLDER MODEL	CHARCOAL CARTRIDGE DIMENSIONS	PARTICULATE PAPER DIAMETER
FJ-19	F&J Model C	2” or 50 mm
FJ-27	F&J Model B	2” or 50 mm
FJ-34	F&J Model C	47 mm
FJ-39	F&J Model B	47 mm
FJ-52	F&J Model M	2” or 50 mm
FJ-54	F&J Model M	47 mm

Available Engineering Units for Flow and Volume:

SLPM / SLP
SCFM / SCF
SCMH / SCM

Digital Flowmeter Keypad/Display



F&J EMERGENCY RESPONSE SAMPLING SYSTEM

AC or DC POWERED AIR SAMPLER

Digital Flow Meter Technology

Model DFCP-60L-AC

NOTABLE FEATURES:

- State-of-the-Art Electronics
- Operating Modes
 - Line Power (100VAC – 250VAC)
 - External 12VDC source
- Lightweight — ~8 lbs. (3.6 kg)
- Maximum Flow 10 to 60 SLPM; typical
- Bright OLED Display; 4 lines x 32 characters
- Automatic Flow Control Feature
- Flowrate and Volume totalizations displayed are corrected to a factory settable reference Temperature and Pressure (4 options available).
- Auto shut-off on time or volume
- Delayed auto start time feature (1 to 60 minutes)
- Brushless 12 VDC motor
- Internal Data Storage Downloadable as (.csv) file
- Data Download via Bluetooth with Optional Bluetooth Dongle for PC Device



**Shown with optional
filter holder FJ-34**

GENERAL DESCRIPTION:

F&J Model DFCP-60L-AC is a lightweight, small footprint, AC/DC voltage powered air sampling system operable from (1) line power, and (2) an external 12VDC source.

The automatic flow control feature with the F&J Digital Flowmeter technology provides maximum flexibility for emergency response sampling responsibilities. The set flowrate is maintained automatically in case of dust loading and does not require operator attention. The delayed start time enables one to start at a later time.

Typical flow range is 10 to 60 SLPM (0.35 to 2.1 SCFM).

The air sampler is also equipped with internal data storage that allows the user to download the sampling data as a .csv file for easy data analysis.

DFCP-60L-AC AC/DC Air Sampler Specifications

Pump Type: High efficiency centrifugal pump

Motor: Brushless 12 VDC; 35,000 rpm

Maximum Flowrate: Typical 60 LPM
with 60 mm HE40T glass fiber media and a CTC50 charcoal cartridge

Power Source:
External – Line Power; 100VAC or 230VAC
External – 12VDC Source

Current Draw: 8.0 A maximum on DC
1.0 A maximum on AC

Filter Holder Fitting: 1.83—12 U.N.F (Air Sampler)
1.80—12 U.N.M (Filter Holder)

Handle: Durable metal / plastic

Weight: ~ 8 lbs. (3.6 kg)

Dimensions: 10.3” L × 10.5” W × 8.5” H
(26 × 27 × 22 cm)
Height with handle extended ~11.4”

Operating Temperature: 18°F to 122°F (-10°C to 50°C)

Decibels: ~66 dBA

Display: Bright OLED ; 4 lines x 32 characters

Elapsed Time: HHH:MM up to 168 hours

Flow Control:
Adjustable from keypad between 10 to 60 LPM

Flow Accuracy: ±4.0% of Full Scale

Factory Settable Reference T and P

Classical STP	0°C, 1 ATM (760 mmHg)
Normal T and P	20°C, 1 ATM (760 mmHg)
Modified Normal T and P	70°F, 1 ATM (760 mmHg)
Standard Ambient T and P	25°C, 1 ATM (760 mmHg)

OPTIONS:

Bluetooth Dongle for PC Device (P/N: DSD-BT)

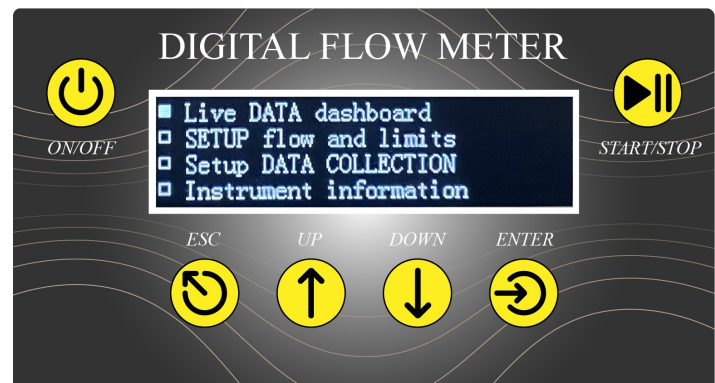
Standard Aluminum Combination Filter Holders Available:

FILTER HOLDER MODEL	CHARCOAL CARTRIDGE DIMENSIONS	PARTICULATE PAPER DIAMETER
FJ-19	F&J Model C	2” or 50 mm
FJ-27	F&J Model B	2” or 50 mm
FJ-34	F&J Model C	47 mm
FJ-39	F&J Model B	47 mm
FJ-52	F&J Model M	2” or 50 mm
FJ-54	F&J Model M	47 mm

Available Engineering Units for Flow and Volume:

SLPM / SL
SCFM / SCF
SCMH / SCM

Digital Flowmeter Keypad/Display



EMERGENCY RESPONSE SAMPLING SYSTEM

Digital Flow Meter Technology

F&J Model DFCEP-75L-400-12Li

NOTABLE FEATURES:

- State-of-the-Art Electronics
- Operating Modes
 - Line Power (100VAC – 250 VAC)
 - On-board 12 Ah LiFePO₄ Battery
- Lightweight — 19 lbs. (8.6 kg)
- Maximum Flow 75 SLPM; typical
- Bright OLED Display; 4 Line x 32 Characters
- Automatic Flow Control Feature
- Flowrate and Volume totalizations displayed are corrected to a factory settable Reference Temperature and Pressure (4 options available)
- Auto shut-off on time or volume
- Ruggedized thick wall plastic enclosure
- Data Storage
- Brushless motor
- Data Download via Bluetooth with Optional Bluetooth Dongle for PC Device



Illustrated With an Optional
FJ-34 Filter Holder

GENERAL DESCRIPTION:

F&J Model DFCEP-75L-400-12Li is a lightweight, small footprint, DC voltage powered air sampling system operable from (1) line power, or (2) the internal 12 Ah / 12VDC LiFePO₄ battery.

This air sampler can be utilized with the optional rain shield filter holder system for use when rain or snow conditions exist.

The automatic flow control feature with the F&J Digital Flowmeter technology provides maximum flexibility for emergency response or environmental sampling responsibilities. The set flowrate is maintained automatically in case of dust loading and does not require operator attention. The air sampler is contained in a lightweight small dimensioned enclosure which is water tight. The unit can be carried very easily by its large, rugged plastic handle.

Typical flow range is 15 - 75 SLPM (0.5 – 2.6 SCFM).

The air sampler is also equipped with internal data storage that allows user to download the sampling data as a .csv file for easy data analysis.

DFCP-75L-400-12Li AC/DC Air Sampler Specifications

Pump Type: High efficiency centrifugal pump

Maximum Flowrate: 75 LPM typical
with FP-47M glass fiber media

Power Source:
External – Line Power; 100VAC to 240VAC
Internal – 12 Ah/12 VDC LiFePO₄ Battery

Current Draw: 8 A maximum
1 A on line power

Filter Holder Fitting: 1.83—12 U.N.F (Air Sampler)
1.80—12 U.N.M (Filter Holder)

Handle: Durable plastic

Weight: 19 lbs. (8.6 kg)

Dimensions: 16.8”L × 9.0”W × 14.0”H
(42.7 × 22.9 × 35.6 cm)

Average Noise Level: 70.3 Db @ 1m

Operating Temperature Range: 18°F to 122°F
(-10°C to 50°C)

Display: Bright OLED; 4 Line x 32 Characters

Elapsed Time: HHH:MM up to 168 hours

Flow Control:
Adjustable from keypad between 15-75 LPM

Flow Accuracy: ±4.0% of Full Scale

Factory Settable Reference T and P

Classical STP	0°C, 1 ATM (760 mmHg)
Normal T and P	20°C, 1 ATM (760 mmHg)
Modified Normal T and P	70°F, 1 ATM (760 mmHg)
Standard Ambient T and P	25°C, 1 ATM (760 mmHg)

OPTIONS:

- Combination Filter Holder with Rainhood
47mm Particulate / C Geometry – FJ-47RH
50mm Particulate / C Geometry – FJ-50RH
- Bluetooth Dongle for PC Device (P/N: BTDG)

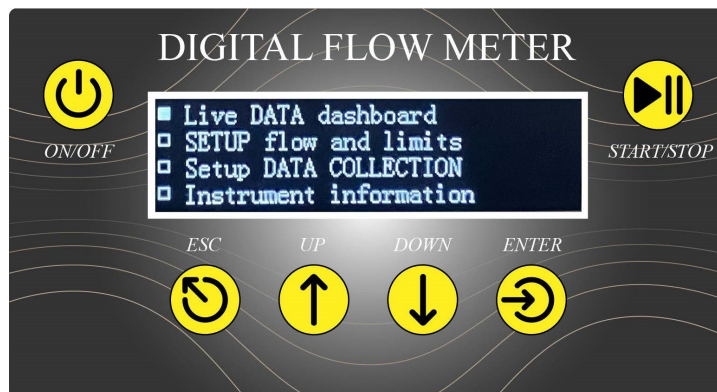
Standard Aluminum Combination Filter Holders Available:

FILTER HOLDER MODEL	CHARCOAL CARTRIDGE DIMENSIONS	PARTICULATE PAPER DIAMETER
FJ-19	F&J Model C	2” or 50 mm
FJ-27	F&J Model B	2” or 50 mm
FJ-34	F&J Model C	47 mm
FJ-39	F&J Model B	47 mm
FJ-552	F&J Model M	2” or 50 mm
FJ-54	F&J Model M	47 mm

Available Engineering Units for Flow and Volume:

SLPM / SLP
SCFM / SCF
SCMH / SCM

Digital Flow Meter Keypad/Display



EMERGENCY RESPONSE SAMPLING SYSTEM

Digital Flow Meter Technology

F&J Model DFCP-75L-400-AC

NOTABLE FEATURES:

- State-of-the-Art Electronics
- Operating Modes
 - Line Power (100VAC – 250 VAC)
 - External 12 VDC Source
- Lightweight — 19 lbs. (8.6 kg)
- Maximum Flow 75 SLPM; typical
- Bright OLED Display; 4 Line x 32 Characters
- Automatic Flow Control Feature
- Flowrate and Volume totalizations displayed are corrected to a factory settable Reference Temperature and Pressure (4 options available)
- Auto shut-off on time or volume
- Ruggedized thick wall plastic enclosure
- Data Storage
- Brushless motor
- Data Download via Bluetooth with Optional Bluetooth Dongle for PC Device



**Illustrated With an Optional
FJ-34 Filter Holder**

GENERAL DESCRIPTION:

F&J Model DFCP-75L-400-AC is a lightweight, small footprint, DC voltage powered air sampling system operable from (1) line power, or (2) auxiliary DC connector (12 – 15 VDC)

This air sampler can be utilized with the optional rain shield filter holder system for use when rain or snow conditions exist.

The automatic flow control feature with the F&J Digital Flowmeter technology provides maximum flexibility for emergency response or environmental sampling responsibilities. The set flowrate is maintained automatically in case of dust loading and does not require operator attention. The air sampler is contained in a lightweight small dimensioned enclosure which is water tight. The unit can be carried very easily by its large, rugged plastic handle.

Typical flow range is 15 - 75 SLPM (0.5 – 2.6 SCFM).

The air sampler is also equipped with internal data storage that allows user to download the sampling data as a .csv file for easy data analysis.

DFCP-75L-400-AC AC/DC Air Sampler Specifications

Pump Type: High efficiency centrifugal pump

Maximum Flowrate: 75 LPM typical
with FP-47M glass fiber media

Power Source:
External – Line Power; 100VAC to 240VAC
External DC – 12-15VDC

Current Draw: 8 A maximum

Filter Holder Fitting: 1.83—12 U.N.F (Air Sampler)
1.80—12 U.N.M (Filter Holder)

Handle: Durable plastic

Weight: 16.75 lbs. (7.59 kg)

Dimensions: 16.8”L × 9.0”W × 14.0”H
(42.7 × 22.9 × 35.6 cm)

Average Noise Level: 70.3 Db @ 1m

Operating Temperature Range: 18°F to 122°F
(-10°C to 50°C)

Display: Bright OLED ; 4 lines x 32 characters

Elapsed Time: DD:HH:MM up to 168 hours

Flow Control:
Adjustable from keypad between 15-75 LPM

Flow Accuracy: ±4.0% of Full Scale

Factory Settable Reference T and P

Classical STP	0°C, 1 ATM (760 mmHg)
Normal T and P	20°C, 1 ATM (760 mmHg)
Modified Normal T and P	70°F, 1 ATM (760 mmHg)
Standard Ambient T and P	25°C, 1 ATM (760 mmHg)

OPTIONS:

- Combination Filter Holder with Rainhood
47mm Particulate / C Geometry – FJ-47RH
50mm Particulate / C Geometry – FJ-50RH
- Bluetooth Dongle for PC Device (P/N: BTDG)

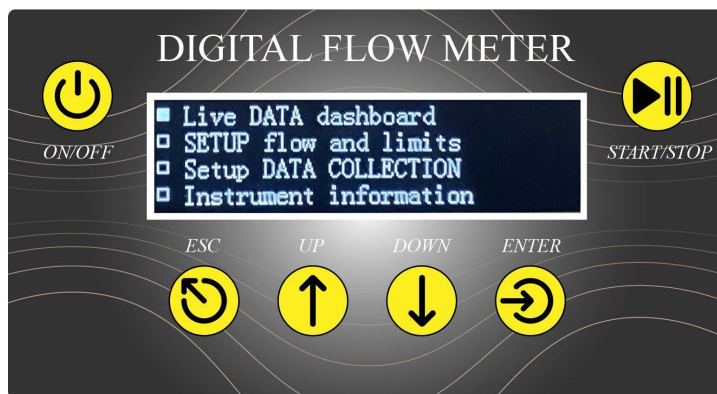
Standard Aluminum Combination Filter Holders Available:

FILTER HOLDER MODEL	CHARCOAL CARTRIDGE DIMENSIONS	PARTICULATE PAPER DIAMETER
FJ-19	F&J Model C	2” or 50 mm
FJ-27	F&J Model B	2” or 50 mm
FJ-34	F&J Model C	47 mm
FJ-39	F&J Model B	47 mm
FJ-52	F&J Model M	2” or 50 mm
FJ-54	F&J Model M	47 mm

Available Engineering Units for Flow and Volume:

SLPM / SLP
SCFM / SCF
SCMH / SCM

Digital Flow Meter Keypad/Display



EMERGENCY RESPONSE AIR SAMPLING SYSTEM

DIGITAL FLOW METER TECHNOLOGY

F&J MODEL DFCP-ABM50-75L-20Li

NOTABLE FEATURES:

- State-of-the-Art Electronics
- Operating Modes
 - Line Power (100VAC – 250VAC)
 - On-board 20 Ah LiFe(PO₄) rechargeable battery
- Lightweight — 20 lbs. (9.1 kg)
- Maximum Flow 75L SLPM Maximum with glass fiber media (98% DOP efficiency)
- Bright OLED Display; 4 Line x 32 Characters
- Automatic Flow Control Feature
- Flowrate and Volume totalizations displayed are corrected to a factory settable Reference Temperature and Pressure (4 options available)
- Auto shut-off on time or volume
- Brushless 12 VDC motor
- Internal Data Storage Downloadable as (.csv) file
- Data Download via Bluetooth with Optional Bluetooth Dongle for PC Device



Shown with optional filter holder FJ-34

GENERAL DESCRIPTION:

F&J Model DFCP-ABM50-75L-20Li is a lightweight, small footprint, AC/DC voltage powered air sampling system operable from (1) line power, or (2) an on-board 20 Ah LiFe(PO₄) battery.

The DFCP-ABM50-75L-20Li is well suited for emergency response air sampling activities and where users do not know whether line power will be available. The unit may be operated from the on-board lithium ion battery, solar power, or a wind power source through either the AC input or DC input connectors.

The automatic flow control feature with the F&J Digital Flowmeter technology provides maximum flexibility for emergency response sampling responsibilities. The set flowrate is maintained automatically in case of dust loading and does not require operator attention. The air sampler is contained in a rugged, metal, small dimensioned enclosure which is water tight. The unit can be carried very easily by its metal handle.

Typical flow range is 10 - 75 SLPM (0.35 – 2.7 SCFM).

The air sampler is also equipped with internal data storage that allows the user to download the sampling data as a .csv file for easy data analysis.

DFCP-ABM50-75L-20Li AC/DC Air Sampler Specifications

Pump Type: High efficiency centrifugal pump

Motor: Brushless 12 VDC; 35,000 rpm

Maximum Flowrate: 75 LPM typical
with glass fiber media (98% DOP efficiency)

Power Source:
Line Power; 100VAC to 250VAC
On-board LiFe(PO₄) battery (20 Ah/12.8 VDC)

Current Draw: 4.0 A maximum

Operating Time on Battery: 4 plus hours

Filter Holder Fitting: 1.83—12 U.N.F (Air Sampler)
1.80—12 U.N.M (Filter Holder)

Enclosure: Steel

Handle: Durable metal

Weight: 20 lbs. (9.1 kg)

Dimensions: 13.8”L × 9.5”W × 9”H
(35.0 × 24.2 × 22.8 cm)

Operating Temperature Range:
18°F-122°F (-10°C-50°C)

Display: Bright OLED; 4 Line x 32 Characters

Elapsed Time: HHH:MM up to 168 hours

Flow Control:
Adjustable from keypad between 10-75 LPM

Flow Accuracy: ±4.0% of Full Scale

Factory Settable Reference T and P

Classical STP	0°C, 1 ATM (760 mmHg)
Normal T and P	20°C, 1 ATM (760 mmHg)
Modified Normal T and P	70°F, 1 ATM (760 mmHg)
Standard Ambient T and P	25°C, 1 ATM (760 mmHg)

OPTIONS:

- Bluetooth Dongle for PC Device (P/N: BTDG)

Standard Aluminum Combination Filter Holders Available:

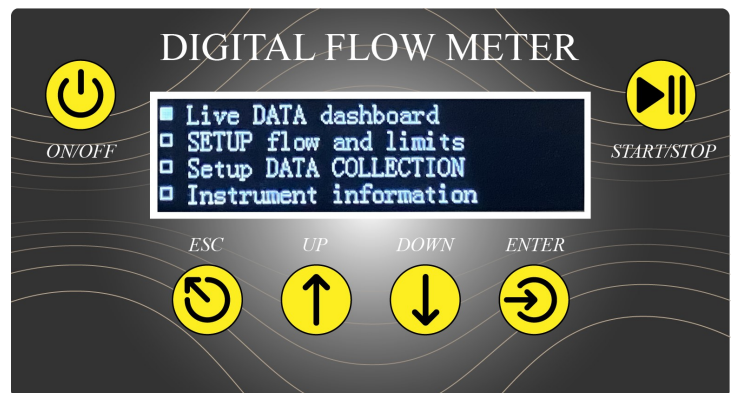
FILTER HOLDER MODEL	CHARCOAL CARTRIDGE DIMENSIONS	PARTICULATE PAPER DIAMETER
FJ-19	F&J Model C	2” or 50 mm
FJ-27	F&J Model B	2” or 50 mm
FJ-34	F&J Model C	47 mm
FJ-39	F&J Model B	47 mm
FJ-52	F&J Model M	2” or 50 mm
FJ-54	F&J Model M	47 mm

Filter holders for 102 mm and 110 mm are available

Available Engineering Units for Flow and Volume:

SLPM / SL
SCFM / SCF
SCMH / SCM

Digital Flowmeter Keypad/Display



EMERGENCY RESPONSE AIR SAMPLING SYSTEM

DIGITAL FLOW METER TECHNOLOGY

F&J MODEL DFCP-ABM50-75L-AC

NOTABLE FEATURES:

- State-of-the-Art Electronics
- Operating Modes
 - Line Power (100VAC – 250VAC)
 - External 12 VDC Source
- Lightweight — 14 lbs. (6.6 kg)
- Maximum Flow 75L SLPM Maximum with glass fiber media (98% DOP efficiency)
- Bright OLED Display; 4 Line x 32 Characters
- Automatic Flow Control Feature
- Flowrate and Volume totalizations displayed are corrected to a factory settable Reference Temperature and Pressure (4 options available)
- Auto shut-off on time or volume
- Internal Data Storage Downloadable as (.csv) file
- Data Download via Bluetooth with Optional Bluetooth Dongle for PC Device



Shown with optional filter holder FJ-34

GENERAL DESCRIPTION:

F&J Model DFCP-ABM50-75L-AC is a lightweight, small footprint, AC/DC voltage powered air sampling system operable from (1) line power, or (2) an external 12-15 VDC power source.

The DFCP-ABM50-75L-AC is well suited for emergency response air sampling activities and where users do not know whether line power will be available. The unit may be operated from a solar power, or a wind power source through the DC input connectors coupled to a battery bank charged from the alternative energy source.

The automatic flow control feature with the F&J Digital Flowmeter technology provides maximum flexibility for emergency response sampling responsibilities. The set flowrate is maintained automatically in case of dust loading and does not require operator attention. The air sampler is contained in a rugged, metal, small dimensioned enclosure which is water tight. The unit can be carried very easily by its metal handle.

Typical flow range is 10 - 75 SLPM (.35 – 2.7 SCFM).

The air sampler is also equipped with internal data storage that allows the user to download the sampling data as a .csv file for easy data analysis.

DFCP-ABM50-75L-AC AC/DC Air Sampler Specifications

Pump Type: High efficiency centrifugal pump

Maximum Flowrate: 75 LPM typical
with 47 mm glass fiber media (98% DOP efficiency)

Power Source:
Line Power; 100VAC or 250VAC
External – 12VDC Source

Current Draw: 4.0 A maximum

Filter Holder Fitting: 1.83—12 U.N.F (Air Sampler)
1.80—12 U.N.M (Filter Holder)

Enclosure: Steel

Handle: Durable metal

Weight: 14 lbs. (6.6 kg)

Dimensions: 13.8”L × 9.5”W × 9”H
(35.0 × 24.2 × 22.8 cm)

Operating Temperature Range:
18°F-122°F (-10°C-50°C)

Display: Bright OLED; 4 Line x 32 Characters

Elapsed Time: HHH:MM up to 168 hours

Flow Control:
Adjustable from keypad between 10-75 LPM

Flow Accuracy: ±4.0% of Full Scale

Factory Settable Reference T and P

Classical STP	0°C, 1 ATM (760 mmHg)
Normal T and P	20°C, 1 ATM (760 mmHg)
Modified Normal T and P	70°F, 1 ATM (760 mmHg)
Standard Ambient T and P	25°C, 1 ATM (760 mmHg)

OPTIONS:

- Bluetooth Dongle for PC Device (P/N: BTDG)

Standard Aluminum Combination Filter Holders Available:

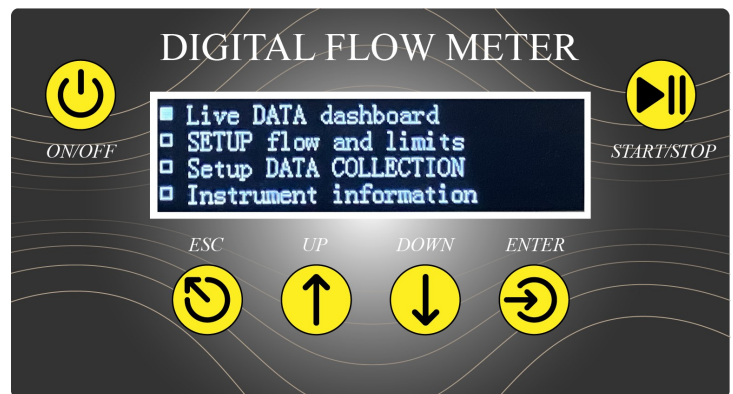
FILTER HOLDER MODEL	CHARCOAL CARTRIDGE DIMENSIONS	PARTICULATE PAPER DIAMETER
FJ-19	F&J Model C	2” or 50 mm
FJ-27	F&J Model B	2” or 50 mm
FJ-34	F&J Model C	47 mm
FJ-39	F&J Model B	47 mm
FJ-52	F&J Model M	2” or 50 mm
FJ-54	F&J Model M	47 mm

Filter holders for 102 mm and 110 mm are available

Available Engineering Units for Flow and Volume:

SLPM / SL
SCFM / SCF
SCMH / SCM

Digital Flowmeter Keypad/Display



EMERGENCY RESPONSE AIR SAMPLING SYSTEM DIGITAL FLOW METER TECHNOLOGY F&J MODEL DFCEP-ABM50-100L-30LI

NOTABLE FEATURES:

- State-of-the-Art Electronics
- Operating Modes
 - Line Power (100VAC – 250VAC)
 - Automobile Cigarette Lighter
 - LIBATBANK-12V
 - On-board 30 Ah LiFe(PO₄) rechargeable battery
- Lightweight — 20 lbs. (9.1 kg)
- Maximum Flow 75L SLPM Maximum with glass fiber media (98% DOP efficiency)
- Bright LED Display
- Automatic Flow Control Feature
- Flowrate and Volume totalizations displayed are corrected to a factory settable Reference Temperature and Pressure (4 options available)
- Auto shut-off on time or volume
- Brushless 12 VDC motor
- Internal Data Storage Downloadable as (.csv) file
- Data Download via Bluetooth with Optional Bluetooth Dongle for PC Device



**Shown with optional
filter holder FJ-34**

NOTABLE FEATURES:

F&J Model DFCEP-ABM50-75L-30Li is a military grade lightweight, small footprint, AC/DC voltage powered air sampling system operable from (1) line power, (2) an on-board 30 Ah LiFe(PO₄) battery, (3) an external 12-15 VDC power source, or (4) from the F&J LIBATBANK-12V external DC power source.

The DFCEP-ABM50-75L-30Li is well suited for emergency response air sampling activities and where users do not know whether line power will be available. The unit may be operated from the on-board lithium ion battery, solar power, or a wind power source through either the AC input or DC input connectors.

The automatic flow control feature with the F&J Digital Flowmeter technology provides maximum flexibility for emergency response sampling responsibilities. The set flowrate is maintained automatically in case of dust loading and does not require operator attention. The air sampler is contained in a rugged, metal, small dimensioned enclosure which is water tight. The unit can be carried very easily by its metal handle.

Typical flow range is 10 - 75 SLPM (0.35 – 2.7 SCFM).

The air sampler is also equipped with internal data storage that allows the user to download the sampling data as a .csv file for easy data analysis.

DFCP-ABM50-100L-30Li AC/DC Air Sampler Specifications

Pump Type: High speed centrifugal blower

Motor: Brushless 12 VDC; 35,000 rpm

Maximum Flowrate: 75 LPM typical
with glass fiber media (98% DOP efficiency)

Power Source:
Line Power; 100VAC to 250VAC
On-board LiFe(PO₄) battery (30 Ah/14.8 VDC)
Vehicle Cigarette Lighter – 12VDC
LIBATBANK-12V

Current Draw: 4.0 A maximum

Operating Time on Battery: 6 plus hours

Filter Holder Fitting: 1.83—12 U.N.F (Air Sampler)
1.80—12 U.N.M (Filter Holder)

Enclosure: Steel

Handle: Durable metal

Weight: 20 lbs. (9.1 kg)

Dimensions: 13.8”L × 9.5”W × 9”H
(35.0 × 24.2 × 22.8 cm)

Operating Temperature Range:
18°F-122°F (-10°C-50°C)

Display: Bright OLED; 4 Line x 32 Characters

Elapsed Time: DD:HH:MM up to 168 hours

Flow Control:
Adjustable from keypad between 10-75 LPM

Flow Accuracy: ±4.0% of Full Scale

Factory Settable Reference T and P

Classical STP	0°C, 1 ATM
Normal T and P	20°C, 1 ATM
Modified Normal T and P	70°F, 1 ATM
Standard Ambient T and P	25°C, 1 ATM

OPTIONS:

- Bluetooth Dongle for PC Device (P/N: BTDG)

Optional

Standard Combination Filter Holders Available:

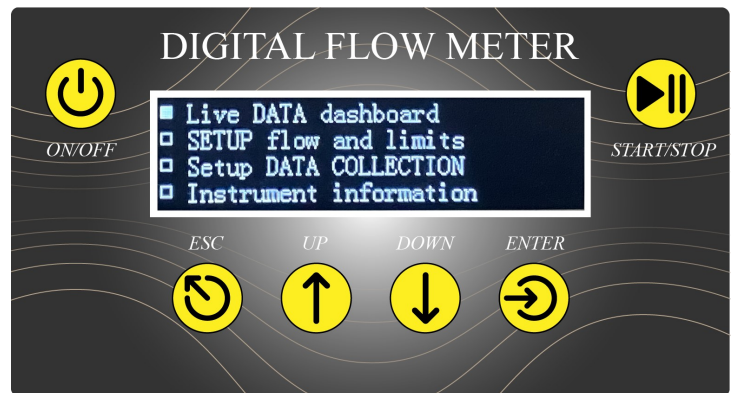
FILTER HOLDER MODEL	CHARCOAL CARTRIDGE DIMENSIONS	PARTICULATE PAPER DIAMETER
FJ-19	F&J Model C	2” or 50 mm
FJ-27	F&J Model B	2” or 50 mm
FJ-34	F&J Model C	47 mm
FJ-39	F&J Model B	47 mm
FJ-52	F&J Model M	2” or 50 mm
FJ-54	F&J Model M	47 mm

Filter holders for 102 mm and 110 mm are available

Available Engineering Units for Flow and Volume:

- SLPM / SL
- SCFM / SCF
- SCMH / SCM

Digital Flowmeter Keypad/Display



INDOOR COMBINATION FILTER HOLDERS

Aluminum Filter Holders

FJ-19	2.0" particulate - Model C
FJ-27	2.0" Particulate - Model B
FJ-34	47 mm Particulate - Model C
FJ-39	47 mm Particulate - Model B
FJ-52	2.0" Particulate - Model M
FJ-54	47 mm Particulate - Model M

Plastic Filter Holders

FJ-19P	2.0" particulate - Model C
FJ-27P	2.0" Particulate - Model B
FJ-34P	47 mm Particulate - Model C
FJ-39P	47 mm Particulate - Model B
FJ-52P	2.0" Particulate - Model M
FJ-54P	47 mm Particulate - Model M

PORTABLE 12V EXTERNAL LI-BATTERY BANK FOR F&J AC/DC AIR SAMPLERS Model LIBATBANK-12V

NOTABLE FEATURES:

- Light weight, durable and efficient Lithium-ion batteries
- Internal battery charging system operable from line power input (100—240VAC, 50/60 Hz)
- Digital and graphical battery capacity indicator (OLED)
- Small dimensioned , water tight enclosure with a large rugged plastic handle for easy carry
- Water tight connection port for powering units outdoors



Lithium-Ion Battery Bank

GENERAL DESCRIPTION:

F&J model LIBATBANK-12V is a light weight one man carry 12V battery bank for use with 12 VDC powered F&J air samplers. The battery bank is approximately 35 Ah and is housed in a small foot print water tight enclosure.

The LIBATBANK-12V can be charged by plugging it into line power (100—240VAC, 50/60Hz) and provides short circuit/reverse polarity protection.

The LIBATBANK-12V includes an OLED display for voltage level and percent capacity of the battery bank. It is provided with a power cord for charging the system and a DC cord for connection to 12VDC powered F&J AC/DC air samplers.

Battery Type:

- Lithiom Iron Phosphate (LiFePO₄)
- 12V 35 Ah Battery Pack
- Built-in Battery Management System

Battery Charging System:

- Internal battery charging system operable from line power (100—240VAC, 50/60Hz)
- Short circuit / Reverse Polarity Protector

Enclosure:

Rugged water tight plastic enclosure with a large durable handle

Weight:

20.5 lbs (~9.29 kgs)

Dimensions:

16.8”L x 9.0”W x 14.0”H
(42.7 x 22.9 x 35.6 cm)

Display:

Bright OLED battery capacity indicator



WORLD CALIBRATOR PC INTERFACEABLE



**WORLD CALIBRATOR
Displayless Version**



**WORLD CALIBRATOR
Vacuum Fluorescent Display
(VFD) Version**

Notable Features:

- PC Interface program:
 - Western or Asian Languages
- Operator Selectable Options
 - Multiple language options; European or Asian Version
 - Multi gas option
 - Volumetric or mass flow
 - At Reading or Full Scale Accuracy Calibration Type
 - Reference T and Reference P
 - Engineering units for all reported parameters
- Semi-Automatic calibration-verification when used with F&J digital air samplers
- Customizable calibration report
- Standard Accuracy: $\pm 1.0\%$ Full Scale (F.S.)
- Customizable to 1% of Reading Accuracy
- Two Year Warranty
- Complementary Storage Case

Notable Features:

- Vacuum Fluorescent Display:
 - (4 lines x 24 characters)
- 4 button key pad for stand alone operation
- Mass flow or Volumetric flow
- Volume Totalization Feature
- Operator selectable Reference T and P
- Operator selectable engineering units
- Multi gas option
- Standard Accuracy: $\pm 1.0\%$ Full Scale (F.S.)
- Customizable to 1% of Reading Accuracy
- User customizable calibration report
- Semi-Automatic calibration-verification when used with F&J digital air samplers
- PC Interface program:
 - Western or Asian languages
- Two Year Warranty
- Complimentary Storage Case

CONSUMABLES AND ACCESSORIES FOR AIR MONITORING PROFESSIONALS

Assorted Filter Paper



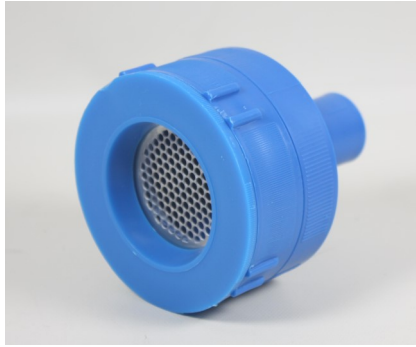
Filter Holders



Radioiodine Collection Cartridges



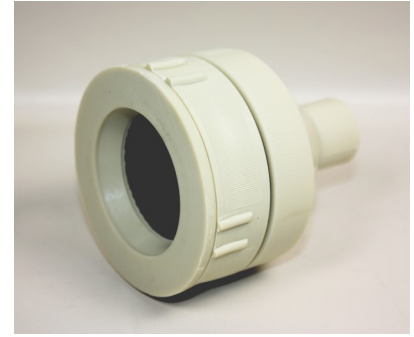
FILTER HOLDERS (Sample Inlets)



FJ-46P



FJ-34P



FJ-05P



FJ-44



FJ-102ILSS



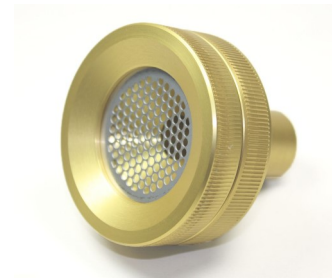
LP-832B



LP-947



FJ-832 Series



FJ-42W

Material

- Plastic
- Aluminum
- Stainless Steel

Designs

- Open Face
- In Line

Air Sampler Type

- Low Volume
- Portable High Volume
- Fixed Station High Volume

PRODUCT PROFILE

Air Sampling Systems

- High Volume Air Samplers
 - Portable Grab Samplers
 - Environmental Systems
 - Enzyme Dust Samplers
 - PM10 Systems
- Continuous Air Samplers
 - Environmental Systems
 - Portable
 - Fixed Station
- Personal Air Samplers
- Emergency Response DC Powered Air Sampling Systems

Filter Paper

- Glass Fiber
- Cellulose
- Membrane
- Quartz

Filter Holders

- Open face
- In-Line
- PAS Filter Holders
- Materials
 - Plastic
 - Aluminum
 - Stainless Steel

Radon Detection Devices

- 2-Day Passive Charcoal Canisters
- 7-Day Passive Charcoal Canisters
- Continuous Radon Monitors

Tritium Detection Systems

- Portable and Fixed Station Collection Systems utilizing Silica Gel or Molecular Sieve Absorbents
- Continuous Tritium Monitors

New Products

- Global Air Sampling Systems
- Digital Flow Meter Air Samplers
- C-14 Collection Systems
- ELITE DIGITAL LIGHT (EDL) Air Samplers
- Isokinetic Air Sampling Systems
- MEGA High Volume Air Samplers
- ULTRA High Volume (CTBTO) Air Samplers
- JUNIOR CTBTO Air Samplers

Radioiodine Collection Cartridges

- TEDA Impregnated Charcoal
- Silver Zeolite
- Custom Cartridges
- Bulk Silver Zeolite

Air Flow Calibrators

- World Calibrator Series
- Compact Digital V.2 Series
- Mini-Calibrator

